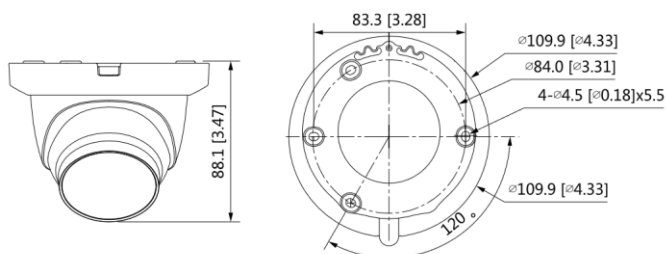




Telecamera Dome HDCVI

Telecamera Dome HDCVI STARLIGHT da 5Mp a 25fps, da esterno/interno IP67, sensore CMOS progressivo 1/2.7", ICR meccanico, ottica 2.8mm, luminosità 0.005Lux/F1.6 (0Lux IR on), led IR portata fino a 30mt, 2-3D, WDR, 1 uscita video, OSD su cavo coassiale (HDCVI o AHD o TVI o CVBS), alimentazione 12Vdc <3.2W. (Φ109.9mm×88.1mm).

PIXVIDEO



CARATTERISTICHE TECNICHE

Technical Specification

Model	HDF500S-G	
Camera		
Image Sensor	1/2.7 inch CMOS	
Max. Resolution	2880 (H) × 1620 (V)	
Pixel	5MP	
Scanning System	Progressive	
Electronic Shutter Speed	PAL: 1/25s–1/100000s NTSC: 1/30s–1/100000s	
S/N Ratio	>65 dB	
Min. Illumination	0.005 Lux/F1.6, 30IRE, 0 Lux IR on	
Illumination Distance	30 m (98.4 ft)	
Illuminator On/Off Control	Auto; manual	
Illuminator Number	1	
Pan/Tilt/Rotation Range	Pan: 0°–360°	
	Tilt: 0°–78°	
	Rotation: 0°–360°	
Lens		
Lens Type	Fixed-focal	
Mount Type	M12	
Focal Length	2.8 mm; 3.6 mm	
Max. Aperture	F1.6	
Field of View	2.8 mm: 132° × 111° × 58°	
	3.6 mm: 109° × 92° × 48°	
Iris Type	Fixed iris	
Close Focus Distance	2.8 mm: 0.9 m (3.0 ft)	
	3.6 mm: 1.6 m (5.2 ft)	
Video		
Frame Rate	CVI: PAL: 5M@25 fps; 4M@25 fps; 1080P@25 fps; NTSC: 5M@25 fps; 4M@30 fps; 1080P@30 fps	
	AHD: PAL: 4M@25 fps; NTSC: 4M@30 fps	
	TVI: PAL: 4M@25 fps; NTSC: 4M@30 fps	
	CVBS: PAL: 960H; NTSC: 960H	
	Resolution	5M (2880 × 1620); 4M (2560 × 1440); 1080P (1920 × 1080); 960 H (960 × 576/960 × 480)
	Day/Night	Auto switch by ICR
	BLC	BLC/HLC/DWDR
	WDR	DWDR
	White Balance	Auto; manual
	Gain Control	Auto; manual
Noise Reduction	2D NR	
Smart IR	Yes	
Mirror	Off/On	
Privacy Masking	Off/On (8 area, rectangle)	

Certifications	
Certifications	CE (EN55032:2015, EN 61000-3-2:2014, EN 61000-3-3:2013, EN55024:2010+A1:2015, EN 55035:2017, EN50130-4:2011+A1:2014, EN 62368-1:2014+A11:2017) FCC (CFR 47 FCC Part 15 subpartB, ANSI C63.4-2014) UL (UL60950-1+CAN/CSA C22.2 No.60950-1)
Port	
Audio Interface	One channel built-in mic (-A)
Video Output	Video output choices of CVI/TVI/AHD/CVBS by one BNC port
Power	
Power Supply	12V ±30% DC
Power Consumption	Max 3.2W (12V DC, IR on)
Environment	
Operating Temperature	-40°C to +60°C (-40°F to 140°F); <95% (non-condensation)
Storage Temperature	-40°C to +60°C (-40°F to 140°F); <95% (non-condensation)
Protection Grade	IP67
Structure	
Casing	Metal dome+metal cover+plastic decorative ring
Camera Dimensions	φ109.9 mm × 88.1 mm (φ4.33" × 3.47")
Net Weight	0.33 kg (0.73 lb)
Gross Weight	0.44 kg (0.97 lb)

DORI Distance

	Lens	Detect	Observe	Recognize	Identify
DORI Distance	2.8 mm	63.6 m (208.7 ft)	25.4 m (83.3 ft)	12.7 m (41.7 ft)	6.4 m (21.0ft)
	3.6 mm	80 m (262.5 ft)	32 m (105.0 ft)	16 m (52.5 ft)	8 m (26.2 ft)